

## Industrial Automation Solutions

DRIVES PLC HMI INDUSTRIAL CPU SERVO MOTOR SERVO DRIVES  
CNC CONTROLLERS PROCESS CONTROL SYSTEMS PCB & POWER SUPPLY

# Introduction

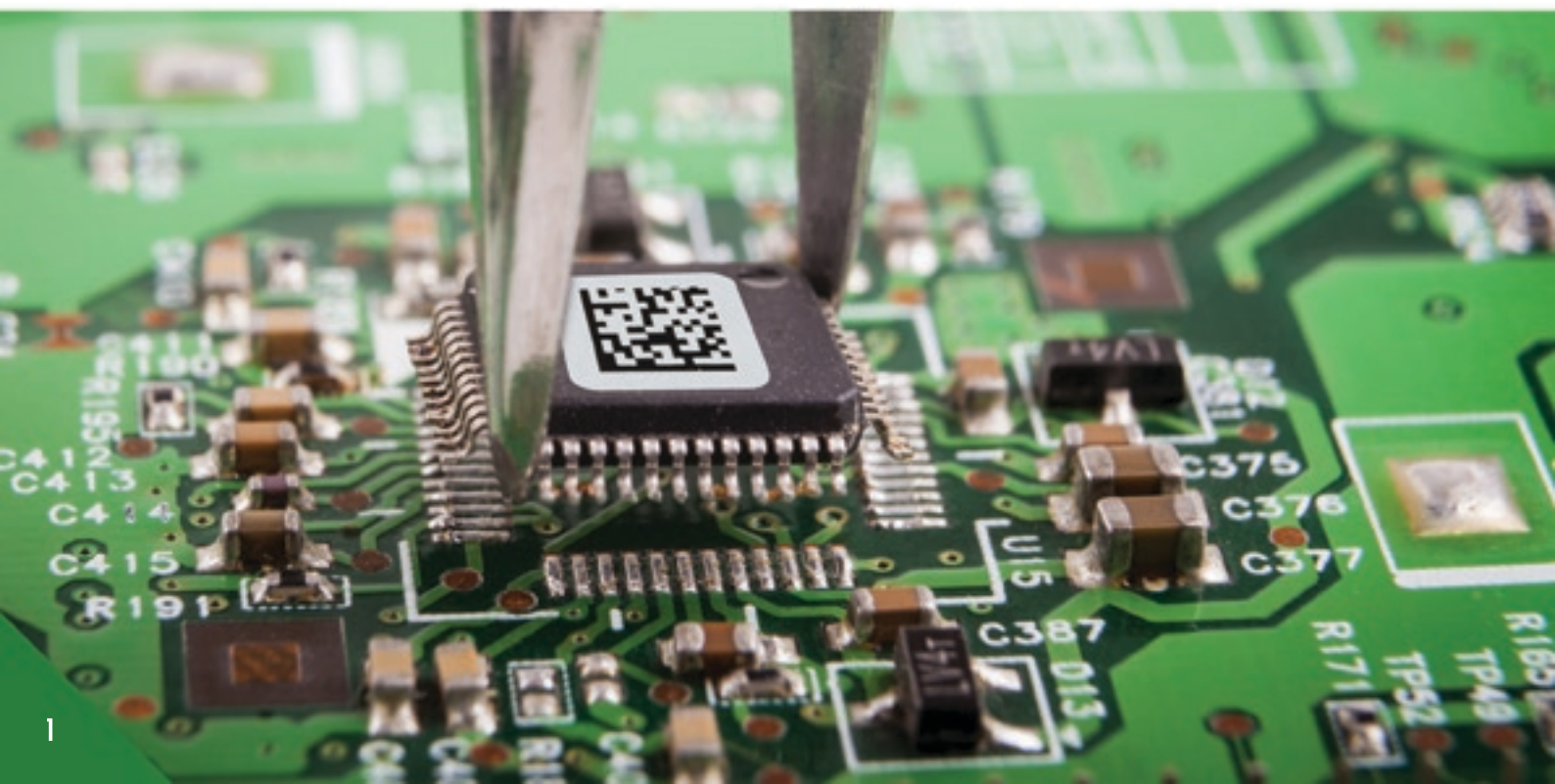
## Pioneers in the field of Industrial Automation Services

Automat has established itself as a Single Source Service Point organization, catering to every requirement in the field of Industrial Automation. From High End OEM Repairs, to Supply of Spares, we at Automat ensure that all your maintenance issues are catered to.

We at Automat comprise of a team of highly skilled and qualified personnel in their respective areas of specialization. The core team comprises of the Engineering Department, the Operations Department, and Customer Service, well knitted together by the Management in a structured and transparent manner to provide our customers the highest standards of service.

Being customer centric, we build strategic partnerships through our global suppliers and supply chain to provide Excellence in Service, Exceptional Quality, Affordable Pricing and Innovative Solutions. Our Network of OEM suppliers, sales offices and extensive distribution network, places us as one of the leading service providers, to all Automation requirements.

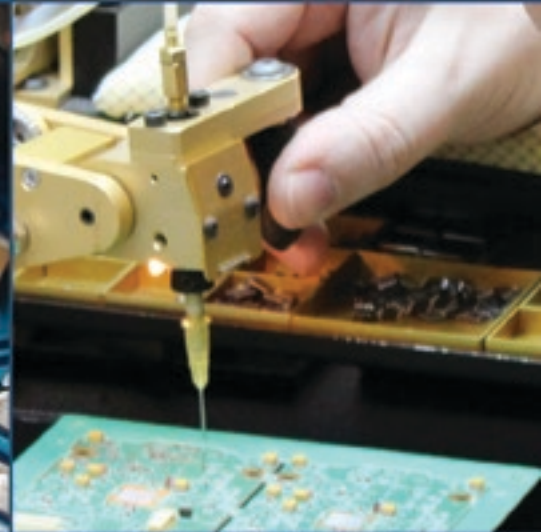
Aggressive in our approach towards research and development, we ensure in providing solutions to Re-manufacturing, System migrations and Turn Key solutions using the latest in cutting edge technology. This is what we call...**Engineering Revived!!!**





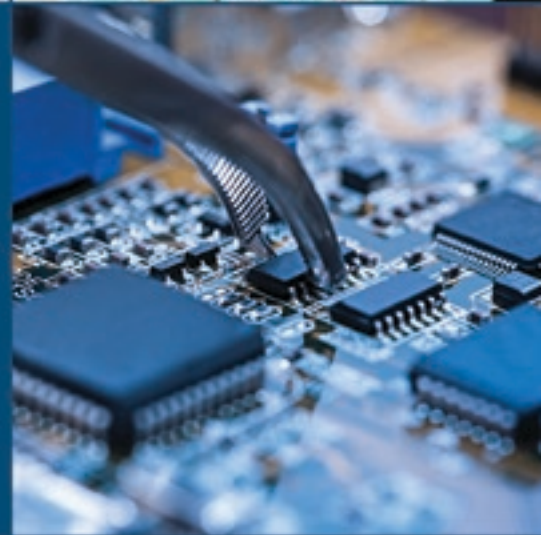
# Our Services

- Automation Repairs
- Supply of Spares
- System Upgrades
- Industrial Training
- Turn Key Solutions



## Why Choose Automat

- 24 X 7 Free Collection & Delivery
- Free Assessment & Quote
- Comprehensive Testing Facility
- Flexible Warranty Options
- Minimise Failure Cost
- Huge Spares Inventory
- Extensive Knowledge Base



# Drives

## AC / DC / Inverter / Soft Starter / VFD



### ABB

- ACS Series
- Sami Start



### Allen Bradley

- Power Flex 4, 40
- Power Flex 525
- Power Flex 700 Series
- 1336 Series



### Danfoss

- VLT Series
- FC Series

### Expertise in repairing

- AC Drives
- DC Drives
- Soft Starters
- Inverters
- VFD



### Emerson

- Unidrive
- Commander Series



### Fuji Electric

- FRENIC - ACE
- FRENIC - Mini
- FRENIC - HVAC
- FRENIC - Eco



### Lenze

- 7800 Series
- 8200 Series
- 9300 Series
- SMD Series



### Mitsubishi

- FR - A 200
- FR - A 500
- FR - A 700
- FR - A 741



### Parker SSD

- 605 Series
- 650 Series
- 690 Series



### Schneider Electric

- Altivar Series
- Altistart Series
- S/E/M Flex Series
- Power Guard



# Drives

## AC / DC / Inverter / Soft Starter / VFD



### SEW

- Movidyn
- Movitrac
- Movidrive



### Delta

- VFD - M
- VFD - B
- VFD - E / EL
- VFD - C2000



### Siemens

- Micro Master
- Midi Master
- Simo Drive
- Simovert
- Master Drive MV/VC/FC
- Sinamics
- Simoreg



### KEB

- Kombivert



### Vacon

- Vacon 10, 20 Series
- NXL , NXS
- NXP Air Cooled



### Yaskawa

- CIMR Series
- A1000/V1000/ Series
- L100A / L100V
- T1000

### Testing

- Testing communication connections
- Testing operator panels, when installed
- Testing the control input (Digital and Analog)
- Testing under nominal power using three stage testing
- Test reports are available upon request.

# PLC

## Input / Output Module, CPU's



### Siemens

- ET Series
- S5 - 100/110/115 U
- S5 - 90/95/130/135/155/150 U
- S7 - 200/300/400
- S7 1200 / Programmers



### ABB

- 07KR240
- Advant Controller 31
- Freelance 2000
- Procontic C531
- T200



### Allen Bradley

- 1756
- Micrologix 1500
- PLC5
- SLC500
- SLC5000



### Telemecanique

- TSX Micro
- SX Quantum
- Schneider SR3
- Schneider TSX Premium
- Schneider TSX Compact
- Schneider TSX Quantum



### Mitsubishi

- Alpha
- FX
- FX2
- Melsec A
- Melsec Q

#### Expertise in repairing:

- CPUs
- I/O modules
- Power supply
- Interface cards
- Programmer devices

#### Testing:

- Memory test by loading a program
- Memory test by disconnecting the power
- Controlling the input and output modules.
- Communication modules that are connected to the processor (when necessary).



### Omron

- CPM1A
- CQM1
- CQM1H
- Sysmac C200 HE
- Sysmac C20



### B&R

- X20 System
- MA 170 System



### GE Fanuc

- GE Series 3/5/6
- GE Series 90-30
- GE RX7i PAC System
- Genius I/O



### Honeywell

- IPC 620-30
- IPC 620-20
- IPC 620-25
- IPC 620-35

# Human Machine Interface

## Touch Screens / Operator Panels / Interface Embedded Industrial CPU's



### Siemens

- Basic Panel Series
- Comfort Panel Series
- Mobile Panel Series
- Key Panel Series
- Industrial Panels



### Beckhoff

- Built in Panel PC
- CP22/26/27 XX
- CP62/65/66 XX
- CP6606/67XX/C33XX
- Panel PC
- CP 32/37/72/77 XX



### Allen Bradley

- Panel View



### Telemecanique

- Magelis
- XBT GT Advanced Series

#### Expertise in repair are:

- Touch screen monitors
- Key pad monitors
- CRT monitors
- Industrial CPU

#### Testing:

- Testing of the button or touch screen
- Testing of the monitor
- Testing the communication connections
- Testing I/O modules, when installed



### Proface

- Quickpanel
- SP 5000 Series
- GP 4000 Series
- LT 4000 Series
- FP 5000 Series



### Omron

- M7 Series
- H7 Series
- NA/NB/ NV Series
- NS/ NT Series



### B & R

- Panel PC 900 Series
- Panel PC 2100 Series



### PILZ

- PiTouch



### Advantech

- AWS 8129/8248/8259
- IPPC 4001D/
- IPPC 6152/6172/6192 A
- IPPC 9151/9171



# Drives

## Servo Drives



### Siemens

- Sinamics
- Simodrive 610
- Simodrive 611
- Simodrive 650
- Simodrive 660
- Simodrive 690



### Baumuller

- Bus 3
- Bus 6 VC
- Analog Drives
- Digital Drives



### Indramat / Rexroth / Bosch

- ANAX
- DIAx 1/2/3/4
- DKR
- Ecodrive 01/03
- Indradrive
- RAC



### Kollmorgen

- 60WKS
- AKD/AKD Basic
- AKD PDMM/N
- S 200-300/DLS
- S700
- MMC Smart Drives



### Fanuc

- Alpha A
- Alpha I
- Alpha iS
- Spindle Drives



### Lenze

- 9400 Highline
- Servo Inverter i700
- Servo Drives ECS



### Allen Bradley

- Ultra Servo
- Kinetix Series



### Parker

- Vix
- Compax 3 / 3M
- Aries Controller
- Gemini GV6/GV6K
- Compax OEM T10X

#### Expertise in repairing:

- Power Section
- Interface modules
- Positioning modules
- Industrial networks
- Feedback
- I/O

#### Testing:

- Testing of interface modules
- Testing of communication connections
- Testing nominal power. (if servo motor is available)
- Testing the feedback of the drive using an encoder simulator
- Testing of I/O (when installed)



# Servo Motor / CNC Controllers

## Servo Motor

- Siemens
- ABB
- Allen Bradley
- LENZE
- SEW
- Control Technique
- many more

### Expertise:

- Feedback: encoder/resolver/tacho
- Brake
- Magnets on the rotor
- Balancing the rotor
- Refurbishing damaged housing and rotor
- Ventilator and Gear

### Testing:

- Measuring / meggering the winding
- Testing the magnetism
- Testing torque of the motor when standing still
- Testing the brake
- Testing the feedback using PWM9, PWM20
- Testing the shaft
- Testing on load



## CNC Controllers

### Expertise in repairing:

- Power supply
- Control units
- Operator panels
- Interface boards
- Positioning modules
- Industrial networks
- Feedback and I/O

### Testing:

- Testing communication connections
- Testing parameter memory
- Testing I/O (when installed)
- Testing monitors in combination with the control unit
- Testing safety boards
- Endurance tests
- Testing extra encoder input connections with an encoder simulator



### GE Fanuc

- Alpha 16/18/21
- Alpha Ai16i/18i/21i
- Series 0 / 15 / 6
- Series 16T
- Series 21I-TB



### Siemens

- 802 D SL
- 840 C
- 840 D / D SL
- Sinumerik

# Electronic Repair

- Free Collection / Delivery / Assessment
- Component Level Repair
- General Service of Industrial Automation
- Warranty on all Repairs
- Reverse Engineering



## Supply of Spares



- Stockists of over 50,000 Spares of Major OEM
- Categories of Spares
  - › Brand NEW OEM
  - › New Surplus
  - › OEM Refurbished
  - › Used
  - › Obsolete
- Exchange Service Available
- Warranty offered on all Spares Supplied

## System Upgrades

### Migration



- Upgrade obsolete system
- Revive obsolete production lines
- Increase manufacturing output
- Effectively manage / upgrade bottle-necks in production lines

### Conversion



- Convert DC system to AC system
- Obsolete AC drives to current systems
- Improve production efficiency
- Better energy saving
- Increase longevity of existing production lines



# Industries & Brands



Food & Beverage



Textile



Pharma



Facility Management



Marine Automation



Paper & Pulp



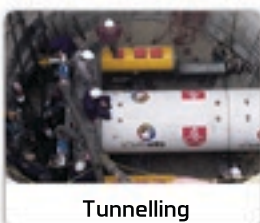
Packaging



Waste Water Management



Plastics



Tunnelling



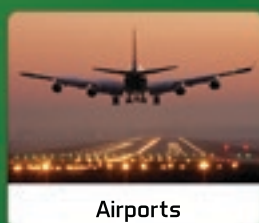
Construction & Cranes



Glass



Port & Harbour



Airports



CNC Machine



Cement

<b>ABB</b>	<b>Allen-Bradley</b>	<b>EUROTHERM DRIVES</b>
<b>Fuji Electric</b>		<b>FANUC</b>
<b>SIEMENS</b>	<b>KEB</b>	<b>Danfoss</b>
<b>Lenze</b>	<b>YASKAWA</b>	<b>Schneider Electric</b>
<b>Telemecanique</b>	<b>Honeywell</b>	<b>BALDOR</b>
<b>Rexroth Indramat</b>	<b>EMERSON</b>	<b>SEW EURODRIVE</b>
<b>Parker</b>	<b>OMRON</b>	<b>MITSUBISHI</b>
<b>VACON</b>	<b>TOSHIBA</b>	<b>HITACHI</b>
<b>BAUMULLER</b>	<b>CONTROL TECHNIQUES</b>	<b>RELIANCE ELECTRIC</b>
<b>PHENIX CONTACT</b>	<b>KOLLMORGEN</b> Because Motion Matters™	<b>SICK</b> Sensor Intelligence.

Automat is neither the authorised distributor nor the authorised service agent for any of the brands mentioned.



Dredging



Metals



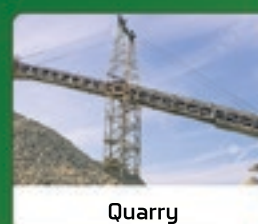
Theme Park



Utilities



Printing



Quarry





- Lowest turnaround time
- Efficient collection & delivery
- Quick assessment & quote
- Emergency service available



- Reliable, Flexible & Efficient
- Huge obsolete spares inventory
- Single source service provider
- Online job tracker



- No cure; No pay
- Reduce operation /maintenance cost
- Revive obsolete assets
- Maximize savings against OEM prices



◀ Scan and get connected

Automat Industrial Solutions  
P.O. Box 238398, Dubai,  
United Arab Emirates

Tel: +971 4 266 3434  
Fax: +971 4 266 3535

email: [info@automat.com.de](mailto:info@automat.com.de)  
Website: [www.automat.com.de](http://www.automat.com.de)